

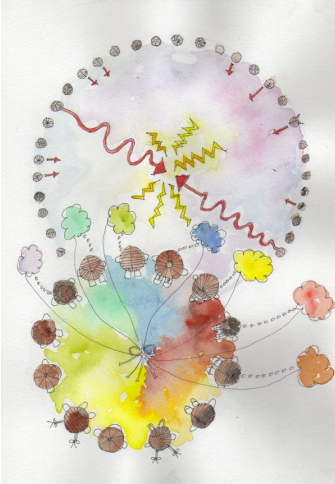
## CREATING LARGE GROUP DIALOGUE in ORGANISATIONS and SOCIETY

A Study Programme of Connected Residential Workshops

Approved as an IGA (London) Short Course and in association with the Group Analytic Society International

*The day will come when whole communities and nations will deal with their affairs in this way.*

SH Foulkes, founder of Group Analysis (1975)



Since Patrick de Maré began his pioneering study of large groups at the IGA in the 1970s it has become clear that *real dialogue* in a large group can release *enormous potential for individual and collective creativity*. This has been demonstrated in management consultancy, management development/training, peace negotiation, prisons, local government, community architecture, schools, higher education, therapeutic communities, reflective citizens projects, youth and community work and in psychotherapy training.

This is the first opportunity to bring together the potential of the large group with our work on management and leadership. It will not only enable participants to facilitate dialogue in any setting of their choosing but it will also place them at the leading edge of sophisticated approaches to management and organisational development.

The intention is to gather a community of practice that will meet every two months over a weekend to develop these ideas together. Our aim is to provide a place of support for participants to initiate and work through a project of their own choice, using the theoretical input and experience of the group to inform their action.

Participants can choose to join, either sequentially every time, or now and then. This approach replicates what so often occurs in this kind of applied work. We will have the opportunity to learn to cope with uncertainty and a different kind of continuity.

### STAFF

Teresa von Sommaruga Howard, Mike Tait, Göran Ahlin

### WHERE?

Roffey Park, one of the foremost colleges for management training in the UK set in beautiful countryside only 15 minutes by taxi from Gatwick airport or 20 minutes from Victoria, an hour from London Bridge or Blackfriars by train. The workshops will be residential with accommodation and all meals.

### WHO FOR?

Anyone from any background wishing to include people in decision-making, peace-making, consultation processes, bridging racial, cultural and religious divides, or tackling local or global challenges.

If you are working in a school or higher education, local government, prison or probation service, social work or trade union, with youth and community development, as a management consultant, in a therapeutic community, or struggling to survive in the NHS, or as clergy, politician or civil servant, you can expect these workshops to give you quite new perspectives.

### WHEN?

YEAR 1: 18 - 20 January 2019; 8 - 10 March 2019; 10 - 12 May 2019; 19 - 21 July 2019; 11 - 13 October 2019

YEAR 2: 17 - 19 January 2020; 6 - 8 March 2020; 8 - 10 May 2020; 17 - 19 July 2020; 9 - 11 October 2020

Start and finish times, 16.30 on Friday to 15.30 on Sunday, are designed to encourage participation from anywhere in the UK, Europe or beyond.

### COST for each YEAR

Early Bird Fee: £1600 per year until 30 October 2018 for YEAR 1 and 30 October 2019 for YEAR 2.

Regular Fee: £1750 per year; or Five Instalments of: £380; £1900.

Additional Fee for Full Board and Accommodation for each weekend: £150.

### REGISTRATION

£150 non-returnable registration fee.

### PAYMENT

Cheques or Online banking to: T D E Howard, Account No. 30992631, Sort Code: 20-30-09.

### NEED FURTHER INFORMATION?

Please check: <http://www.justdialogue.com/welcome/creating-large-group-dialogue/> or please contact Teresa von Sommaruga Howard on: [Teresa@JustDialogue.com](mailto:Teresa@JustDialogue.com).